



Clearwater
DYNAMICS

ROUTE MONITORING
SERVICES

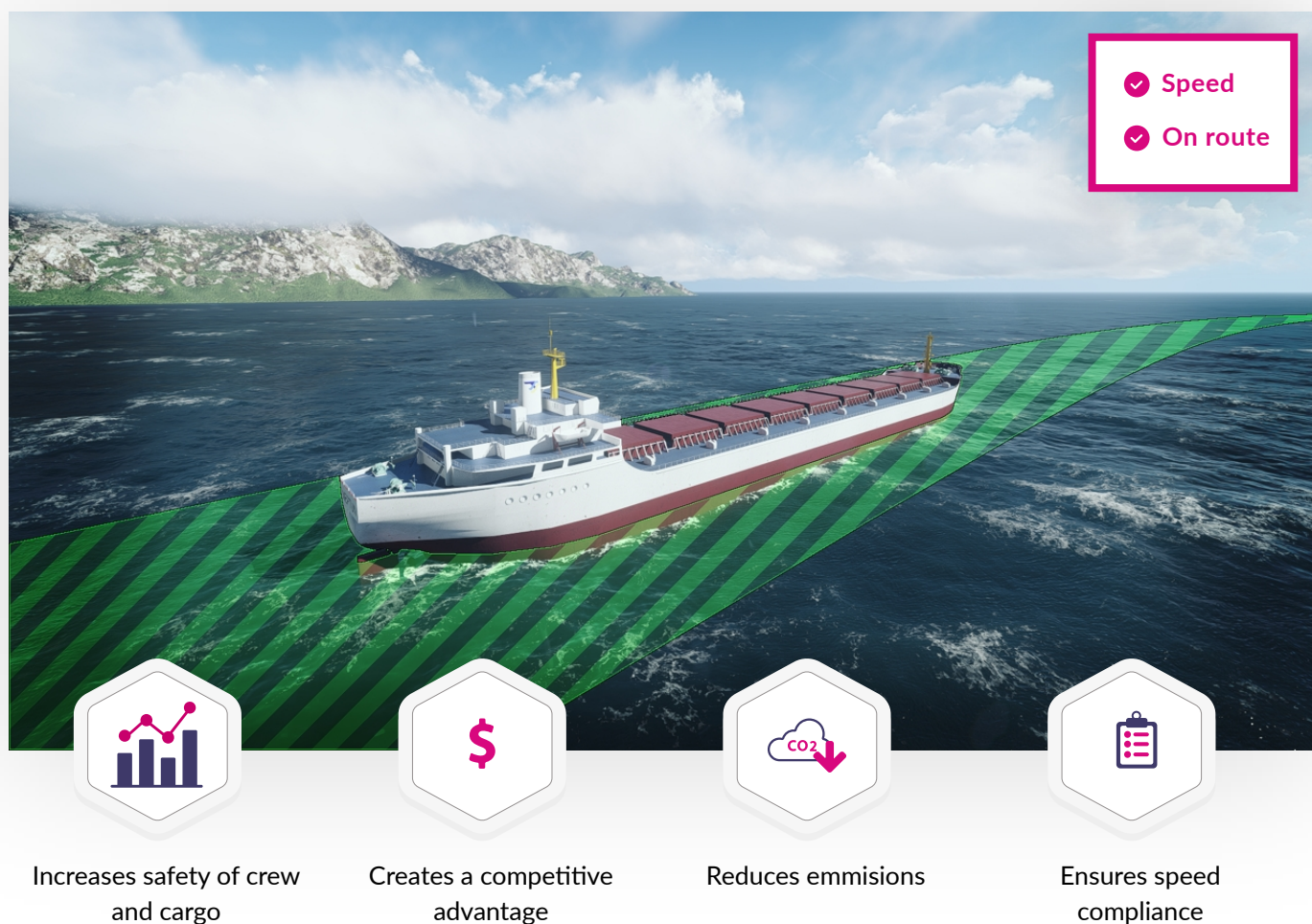


Route Compliance Solution

Designed for vessel owners and operators that require a real-time route compliance, Clearwater have implemented a route monitoring service (RMS). RMS provides exceptional maritime domain awareness throughout the ships voyage with the deployment of an advanced satellite transceiver. Live messaging provides instant notifications of non-compliance with pre-approved route, improving safety for the crew and cargo.

Introducing RMS

The Clearwater RMS module helps operation departments understand vessel movements in real time. Notifications include turn reports, moving start/end, speeding start/end and route entry/exit. Improved communications between vessel and shore based operation departments enhance vessel performance and ensure compliance with charter party agreements.



- ✓ Speed
- ✓ On route

- Increases safety of crew and cargo
- Creates a competitive advantage
- Reduces emissions
- Ensures speed compliance

“ Clearwater RMS is very important to our company as it provides us with genuine real time updates that are critical for our tanker operations ”

Ocean Tankers

REAL TIME MONITORING 24-7



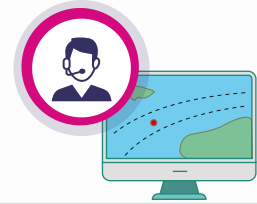
01

Clearwater enters the vessels route



02

The route is displayed for operators to view



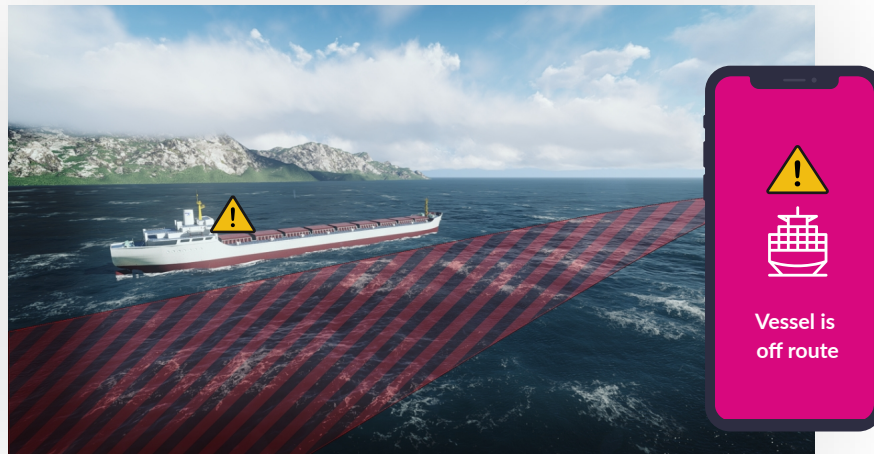
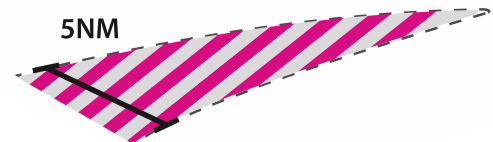
03

When the vessel leaves a route SMS and emails are sent in real time to HQ



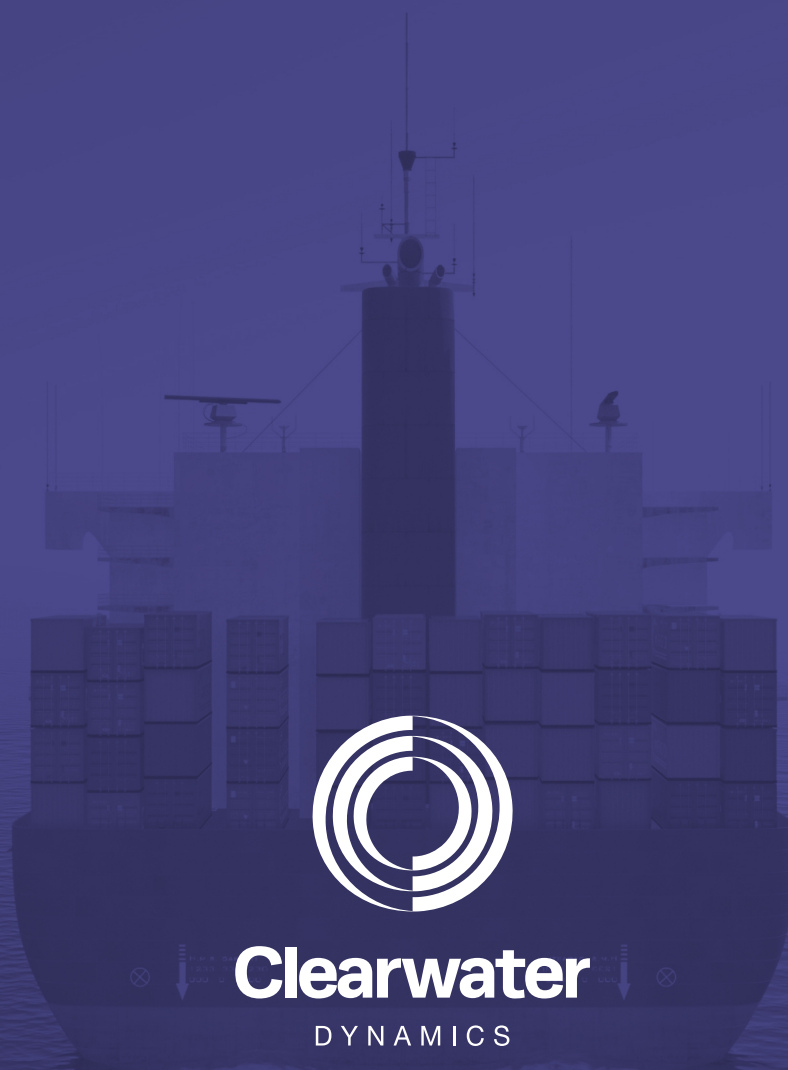
04

Route widths can be adjusted to suit client needs



Benefits of RMS

- Live monitoring
- Savings creation through improved operating
- Reduces emissions and fuel consumption
- Improves vessel compliance through better course/route management
- 24/7 operations room support
- Greater peace of mind
- Enhances maritime domain awareness
- Improves response time in the event of unplanned route exit or movement anomalies



Link House, 25 West Street, Poole, BH15 1LD, UK