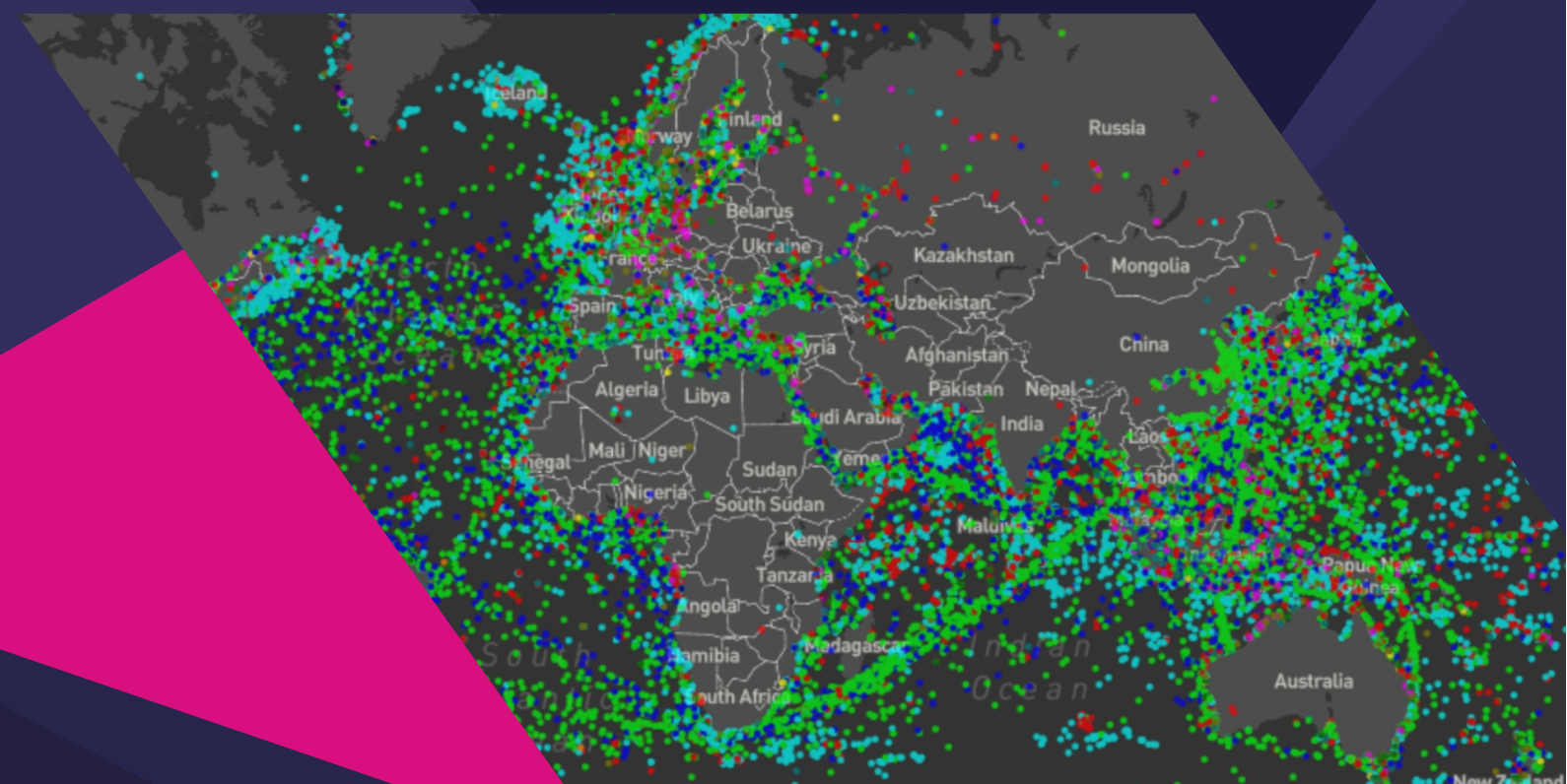




Clearwater
DYNAMICS

GLOBAL AIS



Clearwater AIS

Clearwater's Global AIS Feed delivers the most complete site map of Global shipping worldwide. Combining leading proprietary terrestrial and satellite AIS data we deliver high frequency reporting from 288,000 vessels producing 135M position reports daily.

Integration of Clearwater's AIS feed within the Clearwater portal delivers advanced and bespoke functionality across multiple business sectors within the Maritime industry.



Our clients

Clearwater's existing AIS subscribers use advanced capabilities available in CWAIS to enhance their shipping operations in a myriad of ways, including:



Drive business intelligence and growth analysing live and historic Clearwater vessel voyage data



Enhance maritime security and domain awareness combining CW AIS with existing portal functionality and industry leading intelligence including weather, marine charts, route monitoring and piracy alerts



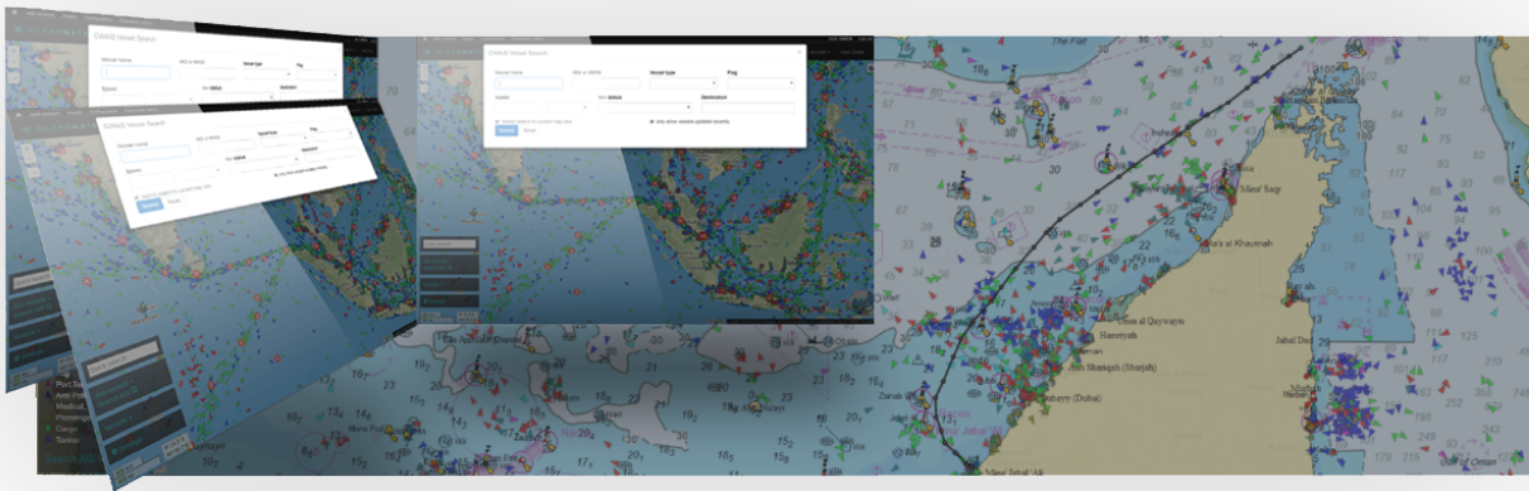
Support environmental, social and governance (ESG) compliance, improve vessel valuations and demonstrate sustainability with CW's ESG reporting module

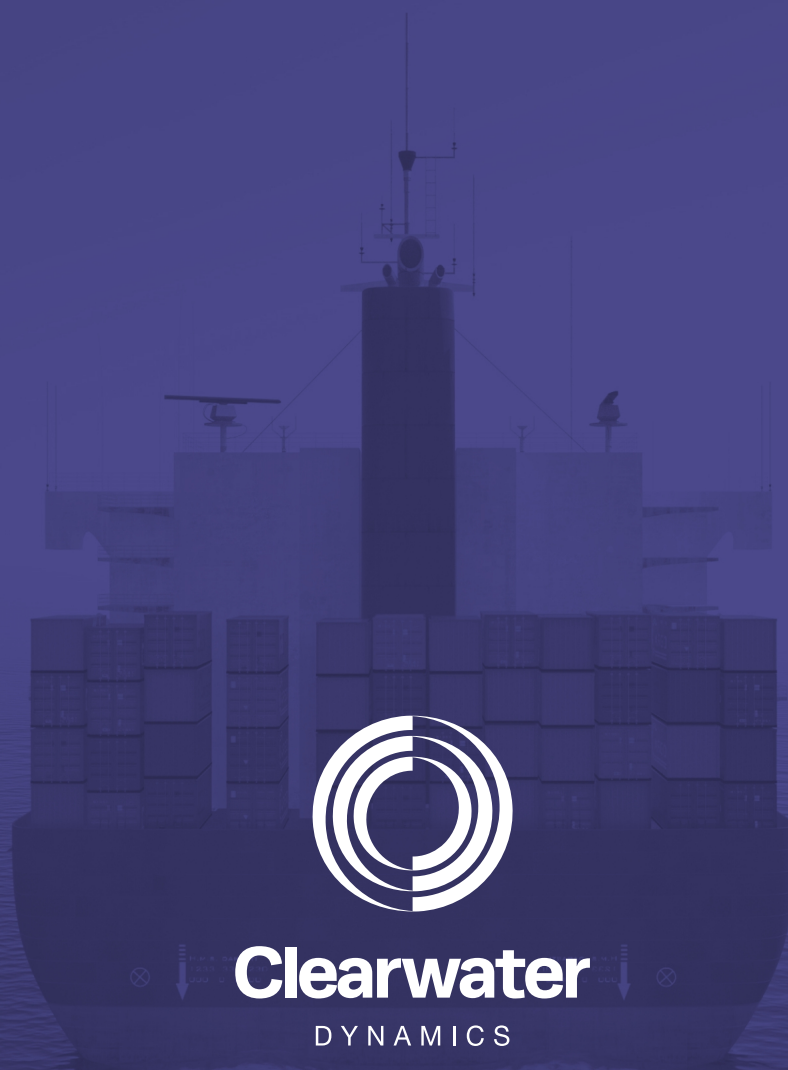
Actionable insights from advanced search

The Clearwater AIS advanced search capabilities facilitate in-depth analysis of vessel activity anywhere in the world. The map zoom level can be used to restrict a search within a specific view of the map for increased speed and accuracy.

Vessel search field options include:

- Name, IMO or MMSI
- Class
- Type
- Flag
- Speed (with additional under/over options)
- Course
- Navigational status
- Destination





Link House, 25 West Street, Poole, BH15 1LD, UK